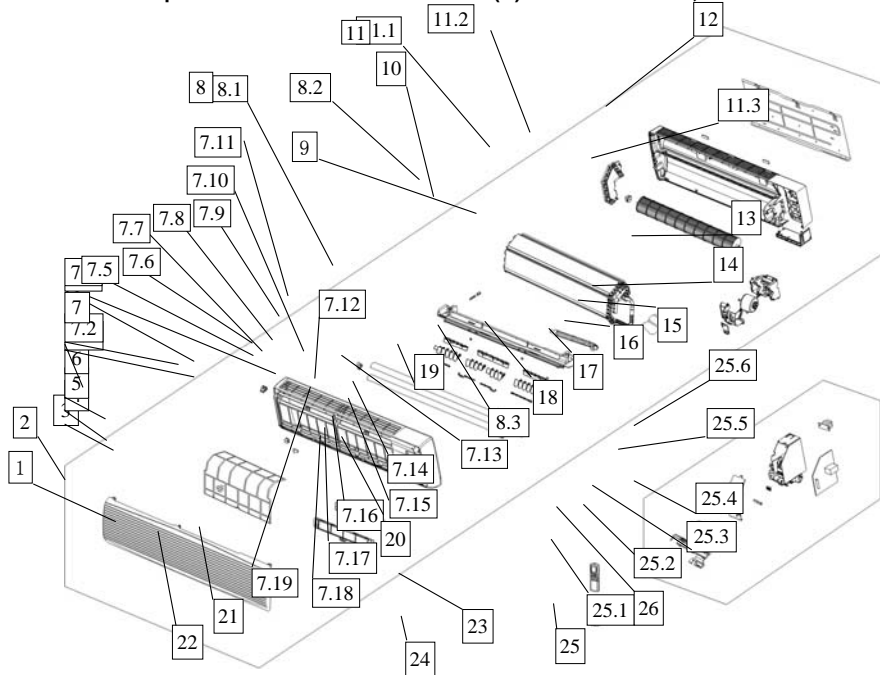


INDOOR UNIT PARTS LIST
Exploded View Parts for Model: TKU(H)18WM 220-230V,60Hz Indoor Unit

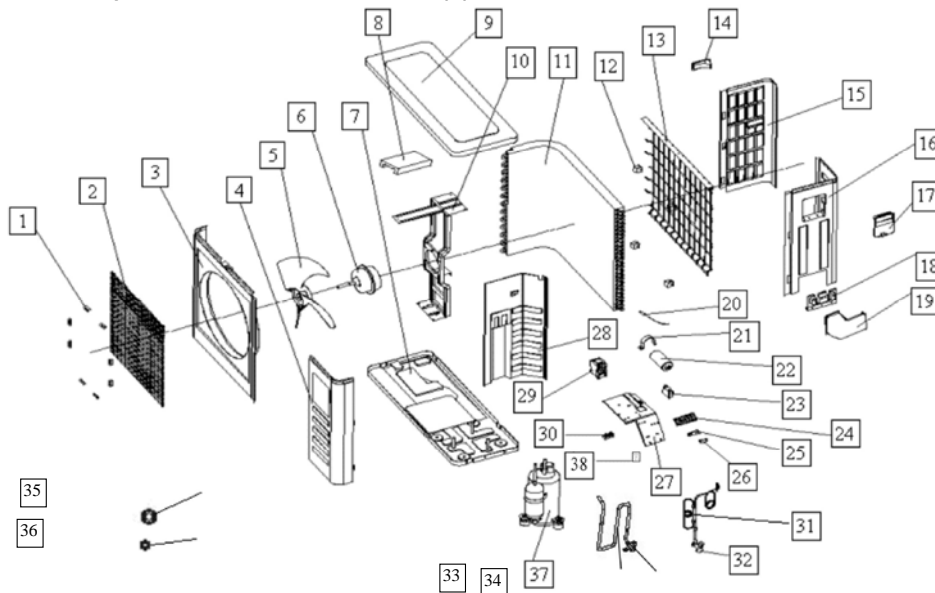


| NO | PARTS DESCRIPTION | QUANTITY | PARTS CONTROL NO. | | UNIT PRICE | REMARK |
|------|--------------------------------------|----------|-------------------|------------|------------|--------|
| No. | Part Name | Quantity | Sale code | BOM code | Price(\$) | |
| 1 | Front panel | 1 | 10336111001 | 2113079365 | P. O. A | |
| 2 | Air filter | 2 | 10336111002 | 2113079121 | P. O. A | |
| 3 | Screw cap | 3 | 10336111003 | 2113079131 | P. O. A | |
| 4 | Down clap for panel frame | 4 | 10336111004 | 2113079366 | P. O. A | |
| 5 | Panel frame | 1 | 10336111005 | 2113079368 | P. O. A | |
| 6 | Up clap for panel frame | 2 | 10336111006 | 2113079367 | P. O. A | |
| 7 | Air out frame assy | 1 | 10336111007 | 2113079134 | P. O. A | |
| 7.1 | Horizontal louver, down | 1 | 10336111008 | 2113079369 | P. O. A | |
| 7.2 | Left bush for horizontal louver | 1 | 10336111009 | 2113079370 | P. O. A | |
| 7.3 | Horizontal louver, up | 1 | 10336111010 | 2113079371 | P. O. A | |
| 7.4 | Louver connector, middle-left | 1 | 10336111011 | 2113079372 | P. O. A | |
| 7.5 | Louver connector, left | 1 | 10336111012 | 2113079373 | P. O. A | |
| 7.6 | Vertical louver, small size | 2 | 10336111013 | 2113079374 | P. O. A | |
| 7.7 | Vertical louver, large size | 12 | 10336111014 | 2113079375 | P. O. A | |
| 7.8 | Louver holder, left | 1 | 10336111015 | 2113079376 | P. O. A | |
| 7.9 | Air out frame | 1 | 10336111016 | 2113079378 | P. O. A | |
| 7.10 | Louver holder, middle | 1 | 10336111017 | 2113079377 | P. O. A | |
| 7.11 | Stopple | 1 | 10336111018 | 2273079003 | P. O. A | |
| 7.12 | Vertical louver, middle size | 2 | 10336111019 | 2113079385 | P. O. A | |
| 7.13 | Bush | 4 | 10336111020 | 2113079388 | P. O. A | |
| 7.14 | Louver holder, right | 1 | 10336111021 | 2113079387 | P. O. A | |
| 7.15 | Louver connector, right | 1 | 10336111022 | 2113079386 | P. O. A | |
| 7.16 | Swing bar for up horizontal louver | 1 | 10336111023 | 2113079383 | P. O. A | |
| 7.17 | Connector for horizontal louver | 1 | 10336111024 | 2113079382 | P. O. A | |
| 7.18 | Swing bar for down horizontal louver | 1 | 10336111025 | 2113079381 | P. O. A | |
| 7.19 | Louver connector, middle-right | 1 | 10336111026 | 2113079384 | P. O. A | |
| 8 | Evaporator assy | 1 | 10336111062 | 2153289001 | P. O. A | |
| 8.1 | Evaporator I | 1 | 10336111063 | 2153289002 | P. O. A | |
| | Evaporator II | 1 | 10336111064 | 2153289003 | P. O. A | |
| | Evaporator III | 1 | 10336111065 | 2153289004 | P. O. A | |
| | Evaporator IV | 1 | 10336111066 | 2153289005 | P. O. A | |
| | Right holder for evaporator | 1 | 10336111032 | 2123079025 | P. O. A | |
| 8.2 | Left holder for evaporator | 1 | 10336111033 | 2113079122 | P. O. A | |
| 8.3 | Input pipe for evaporator | 1 | 10336111067 | 2163289004 | P. O. A | |
| | Output pipe for evaporator | 1 | 10336111068 | 2163289006 | P. O. A | |
| 9 | Cross flow fan, assy | 1 | 10336111036 | 2110029011 | P. O. A | |
| 10 | Bearing holder | 1 | 10336111037 | 2110109004 | P. O. A | |

| | | | | | | |
|------|------------------------------|---|-------------|------------|---------|--|
| 11 | Chassis assy | 1 | 10336111038 | 2113079135 | P. O. A | |
| 11.1 | Chassis | 1 | 10336111039 | 2113079389 | P. O. A | |
| 11.2 | Left rear cover for chassis | 1 | 10336111040 | 2113079379 | P. O. A | |
| 11.3 | Right rear cover for chassis | 1 | 10336111041 | 2113079380 | P. O. A | |
| 12 | Installation plate | 1 | 10336111042 | 2123079026 | P. O. A | |
| 13 | Corner board for chassis | 1 | 10336111043 | 2113079125 | P. O. A | |
| 14 | Base for motor | 1 | 10336111044 | 2113079128 | P. O. A | |
| 15 | Fan motor | 1 | 10336111069 | 2240040617 | P. O. A | |
| 16 | Cover for motor | 1 | 10336111046 | 2113079127 | P. O. A | |
| 17 | Small cover for motor | 1 | 10336111047 | 2113079124 | P. O. A | |
| 18 | Waterproof board | 1 | 10330112015 | 2113079203 | P. O. A | |
| 19 | Drain hose | 1 | 31607111010 | 2113000011 | P. O. A | |
| 20 | Louver motor | 1 | 10336111050 | 2240020007 | P. O. A | |
| 21 | Air cleaner | 1 | 10336111051 | 2113079130 | P. O. A | |
| 22 | Air cleaner holder | 1 | 10336111052 | 2113079129 | P. O. A | |
| 23 | Remote controller | 1 | 10109111203 | 2335509005 | P. O. A | |
| 24 | Holder for remote controller | 1 | 10109121208 | 2115501001 | P. O. A | |
| 25 | E-parts assy | 1 | 10336111070 | 2333289000 | P. O. A | |
| 25.1 | Display board | 1 | 10336111054 | 2133079858 | P. O. A | |
| 25.2 | Wire joint, 4p | 1 | 10609111006 | 2230145105 | P. O. A | |
| 25.3 | Wire clamp | 1 | 10336111056 | 2113079120 | P. O. A | |
| 25.4 | Main control board | 1 | 10336111071 | 2133289001 | P. O. A | |
| 25.5 | E-Parts box | 1 | 10336111058 | 2113079118 | P. O. A | |
| 25.6 | Transformer | 1 | 10336111072 | 2230099007 | P. O. A | |
| 25.7 | Indoor temp sensor | 1 | 15021111014 | 2243079040 | P. O. A | |
| 25.8 | Evaporator temp sensor | 1 | 10109121242 | 2243069051 | P. O. A | |
| 26 | E-part box cover | 1 | 10336111059 | 2113079137 | P. O. A | |
| 27 | Bottom cover for e-box | 1 | 10336111060 | 2113079123 | P. O. A | |
| 28 | Clamp for temp sensor | 1 | 10109121231 | 2113039070 | P. O. A | |
| 29 | Protector for temp sensor | 1 | 10112121224 | 2113049002 | P. O. A | |
| 30 | Copper nut, GLM-C03 | 1 | 10336111073 | 2160033003 | P. O. A | |
| 31 | Copper nut, GLM-A01 | 1 | 10336111074 | 2160033001 | P. O. A | |

OUTDOOR UNIT PARTS LIST

Exploded View Parts for Model TKU(H)18WM 220~230V, 60Hz Outdoor Unit



| NO | PARTS DESCRIPTION | QUANTITY | PARTS CONTROL NO. | | UNIT PRICE | REMARK |
|-----|-------------------------------|----------|-------------------|------------|------------|--------|
| No. | Part Name | Quantity | Sale code | BOM code | Price(\$) | |
| 1 | Clamp for front net | 8 | 10112121801 | 2113511801 | P. O. A | |
| 2 | Front net | 1 | 10118121801 | 2124550017 | P. O. A | |
| 3 | Front clapboard | 1 | 53618121801 | 2124550037 | P. O. A | |
| 4 | Front right clapboard | 1 | 10118121803 | 2124551101 | P. O. A | |
| 5 | Propeller fan | 1 | 10118121804 | 2114550002 | P. O. A | |
| 6 | Fan motor | 1 | 10118123801 | 2240041715 | P. O. A | |
| 7 | Chassis | 1 | 10122113803 | 2124550022 | P. O. A | |
| 8 | Foam over holder for motor | 1 | 10118121807 | 2224550001 | P. O. A | |
| 9 | Cover | 1 | 10118121827 | 2124550031 | P. O. A | |
| 10 | Holder for fan motor | 1 | 10118121809 | 2124550020 | P. O. A | |
| 11 | Condenser | 1 | 12818111802 | 2153539008 | P. O. A | |
| 13 | Rear Net | 1 | 10924121809 | 2114550004 | P. O. A | |
| 14 | Small handle | 1 | 10830121811 | 2115029006 | P. O. A | |
| 15 | Left clapboard | 1 | 10924121808 | 2124550032 | P. O. A | |
| 16 | Rear right clapboard | 1 | 10309121010 | 2123549046 | P. O. A | |
| 17 | Big handle | 1 | 10309121003 | 2123529217 | P. O. A | |
| 18 | Installation plate for valves | 1 | 10118113805 | 2123500018 | P. O. A | |
| 19 | Water collector | 1 | 10118121832 | 2113529005 | P. O. A | |
| 21 | Capacitor clamp | 1 | 10112121814 | 2120010002 | P. O. A | |
| 22 | Compressor capacitor | 1 | 50418121802 | 2240109012 | P. O. A | |
| 23 | Fan motor capacitor | 1 | 10109121819 | 2240110351 | P. O. A | |
| 24 | Wire joint | 1 | 10309121011 | 2230145099 | P. O. A | |
| 25 | Washer for wire joint | 1 | 10112121817 | 2113500004 | P. O. A | |
| 26 | Clamp for wiring | 1 | 10118121823 | 2124540027 | P. O. A | |
| 27 | E-parts installation box | 1 | 13821111803 | 2123549049 | P. O. A | |
| 28 | Separating board | 1 | 10124111808 | 2123530552 | P. O. A | |
| 29 | Contacter | 1 | 10121121806 | 2230085004 | P. O. A | |
| 30 | Wire joint for multiplexer | 1 | 10121121809 | 2230145035 | P. O. A | |
| 31 | High Pressure Valve Ass'y | 1 | 10336111816 | 2163789014 | P. O. A | |
| 32 | Liquid pipe valve | 1 | 50118121802 | 2160074522 | P. O. A | |
| 33 | Low pressure Valve Ass'y | 1 | 10321111813 | 2163789059 | P. O. A | |
| 34 | Gas pipe valve | 1 | 50118121803 | 2160072617 | P. O. A | |
| 35 | Copper nut, TLM-A01 | 1 | 10909121012 | 2160032000 | P. O. A | |
| 36 | Copper nut, TLM-C03 | 1 | 10912121019 | 2160032002 | P. O. A | |
| 37 | Compressor | 1 | 10336111818 | 2140063370 | P. O. A | |
| 38 | Outdoor main control board | 1 | 15021111803 | 2133549111 | P. O. A | |